

Excellent Technology, Efficiency and Quality

**New energy
for the future**



Lionic[®]

Lithium-ion energy systems
for the materials handling industry



LIONIC® reduces the total cost of ownership (TCO) of your industrial truck operations

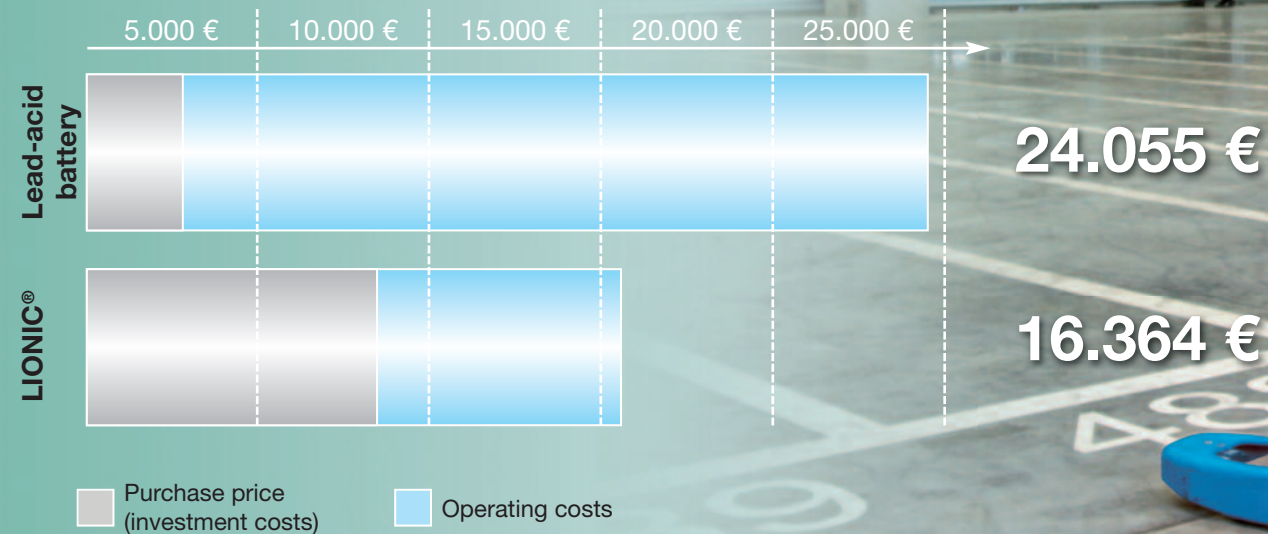


Fig. 1: Cost comparison 375 Ah lead-acid batteries vs. LIONIC® 240 Ah energy system based on 2-shift operation over a period of 5 years. (investment and operating costs)

LIONIC® – the highly efficient energy system for the materials handling industry

- Fast charging
- Opportunity charging
- Maintenance-free, no topping up with water
- Low operating costs
- Long life
- > 3000 cycles
- Reliable operation

Fig. 2: LIONIC® energy system
48 V / 18 kWh (360 Ah)



More energy and lower costs thanks to opportunity charging

Make better use of equipment, increase cost efficiency

- No need for a replacement battery
- Opportunity charging possible at any time (25 % charge in 20 min)
- 100 % charge in 2.0 h

LIONIC® energy systems are capable of fast charging and can also be opportunity charged. Charging is carried out at constant current. In 2-shift operation, a replacement battery is not required if opportunity charging is carried out during breaks (1x15 min and 1x30 min per shift). As an example, Fig. 3 shows the capacity curve of a LIONIC® 24 V / 9 kWh (360 Ah) energy system for 2-shift operation with intermediate charging.

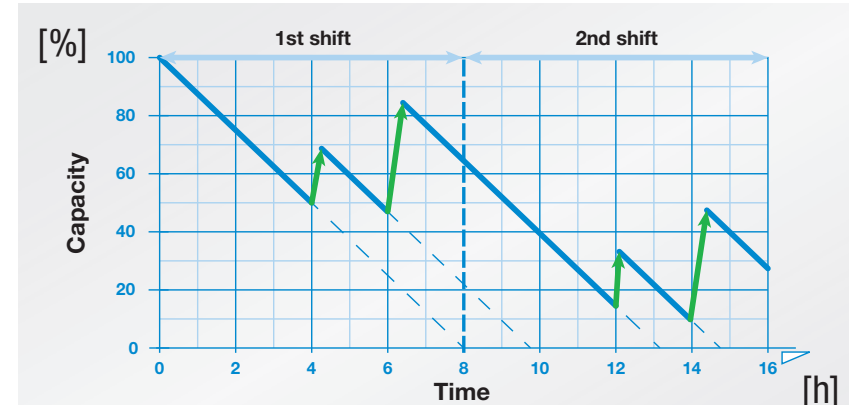


Fig. 3: Capacity curve of a LIONIC® 24 V / 9 kWh (360 Ah) energy system for 2-shift operation with opportunity charging

LIONIC® energy systems provide up to 30 % higher energy efficiency

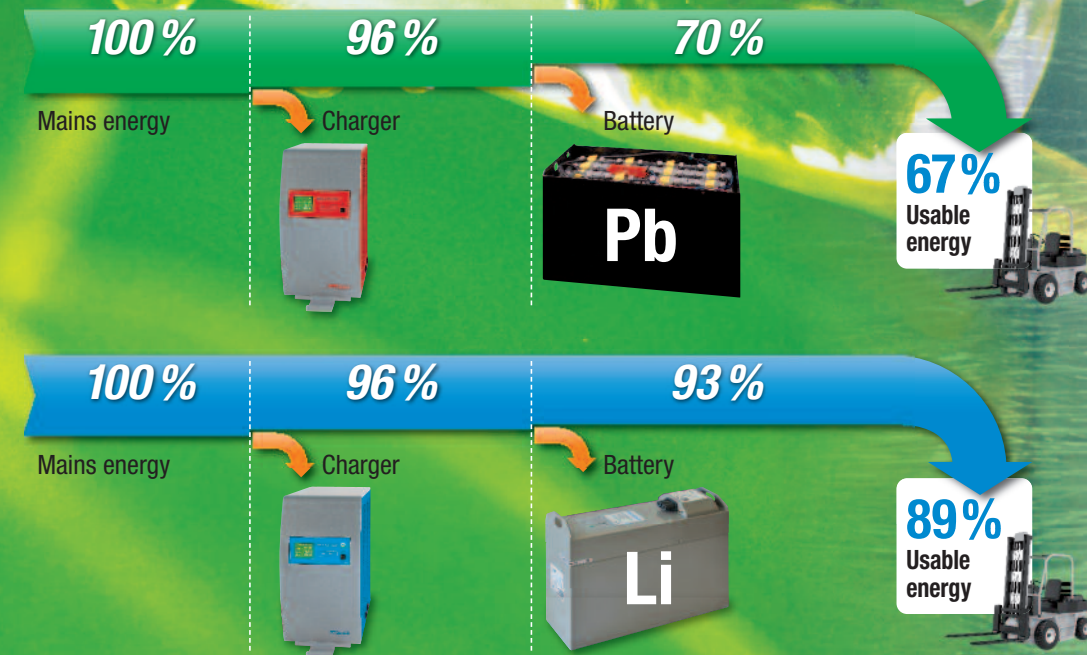


Fig. 4: Comparison of usable energy for lead-acid and lithium batteries

LIONIC® – Lower energy consumption, less CO₂

Economic and environmental advantages:

- Reduced energy costs
- High efficiency
- Emission-free
- Low self-discharge
- Energy recovery system e.g. during braking
- Stand-by mode
- Environmentally friendly
- Recyclable



Fig. 5: LIONIC® energy system
24 V / 6 kWh (240 Ah)

LIONIC® – Higher energy efficiency reduces your costs and protects the environment!

As Fig. 4 shows, the electrochemical conversion of the electrical energy in the lead-acid battery takes place with an efficiency of only 70 %.

The losses arise due to the charge factor, the large voltage swing between charge and discharge, and the temperature rise in the battery during the charging/discharging process.

Only 67 % of the full mains energy is available for the operation of electric vehicles powered by lead-acid batteries.

If LIONIC® energy systems are used instead of lead-acid batteries, the usable energy for the electric vehicle increases significantly to 89 %. This is because the efficiency of LIONIC® energy systems is approx. 93 % and therefore substantially higher than with lead-acid batteries.

This high efficiency is the result of a reduced charge factor, lower voltage swing and lower temperature rise when charging and discharging.

This gives rise to significantly better energy efficiency with LIONIC® energy systems.

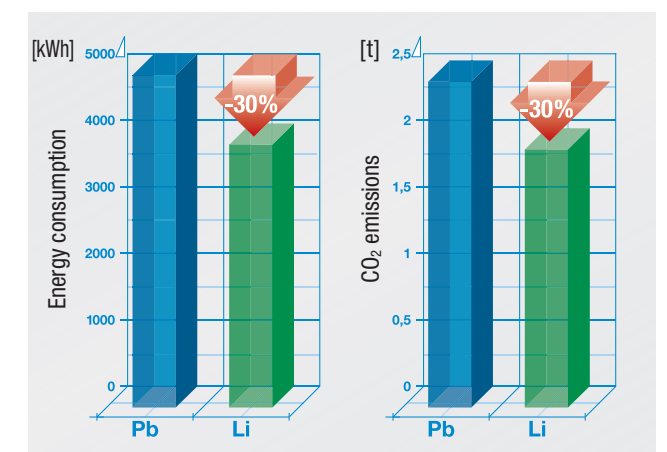


Fig. 6: Annual energy consumption and CO₂ emissions for charging traction batteries - lead-acid battery (Pb)/lithium-ion battery (Li)

Compared with lead-acid batteries, 30 % less electrical energy is required for every charging operation. The costs for electrical energy and the figures for the relevant CO₂ emissions reduce equally as a result of using LIONIC® energy systems.

Lithium vs. lead-acid battery – saving in operating costs of a LIONIC® 24 V / 6 kWh (240 Ah) energy system

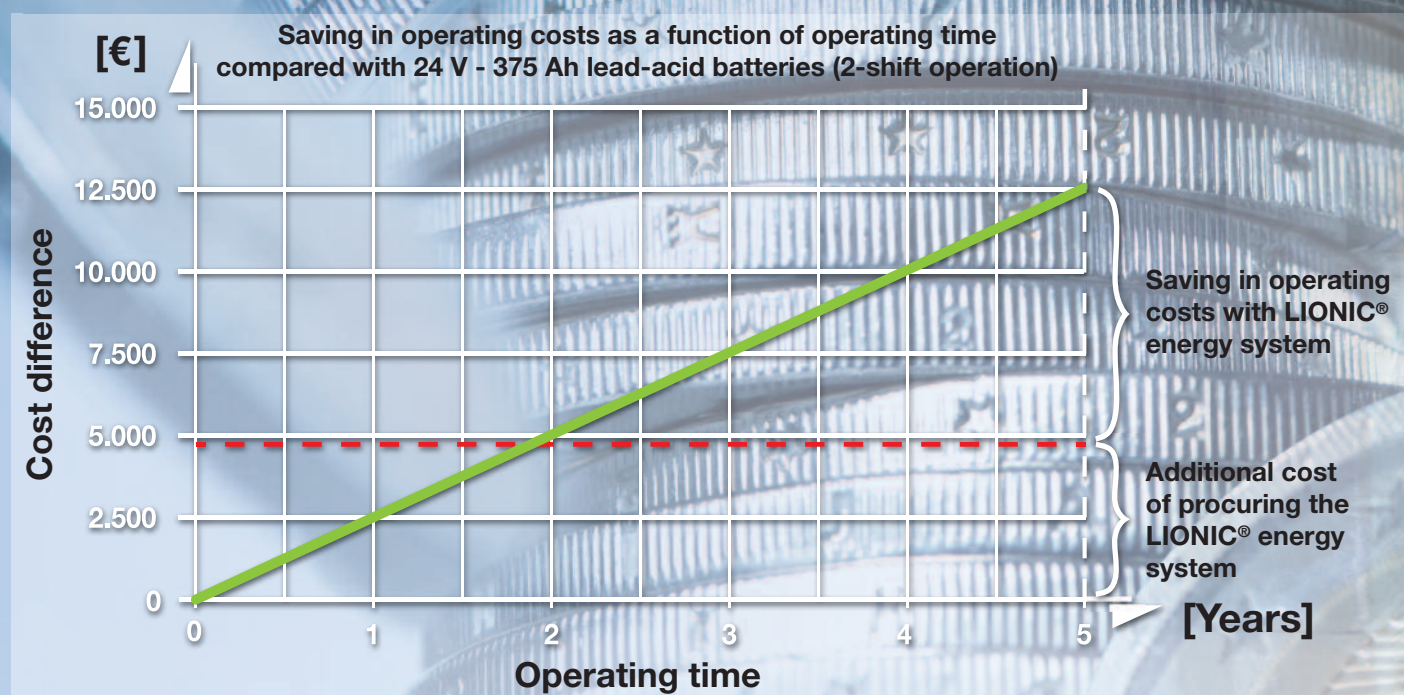


Fig. 7: The additional cost of investing in a LIONIC® energy system is compensated for by the savings in operating costs after just 2 years.

LIONIC® – The efficient energy system with the following cost advantages

- Approx. 30 % reduced energy costs
- Approx. 75 % lower maintenance costs
- Approx. 60 % lower battery handling costs



The diagrams (Fig. 7 and 9) show the large difference in maintenance and battery-handling costs for lead-acid and lithium-ion batteries. The cost comparison is based on 2-shift operation with two lead-acid batteries compared with one lithium-ion battery.

With lead-acid batteries, maintenance in the form of topping up the water is carried out once a week; with the LIONIC® energy system, inspection only has to be carried out once a year.

With lead-acid batteries, costs are incurred at every battery changeover due to the 2-shift operation (7 battery changes/week). With the LIONIC® energy system, short-term opportunity charging eliminates the costs for changing batteries. (see also Fig. 3, Page 3)

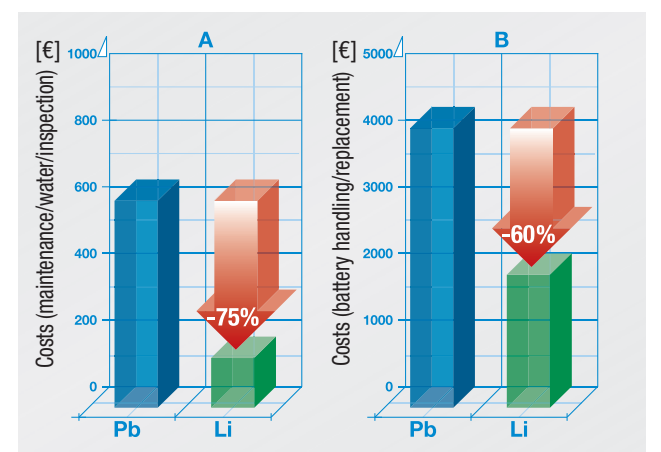


Fig. 9: Lead-acid battery (Pb) vs. LIONIC® energy system (Li), annual cost comparison for:
A) Maintenance and water or inspection (for 2-shift operation)
B) Battery handling/battery changeover or charging (for 2-shift operation)

**LIONIC® – operationally reliable and emission-free
ideal for the food trade and refrigerated warehouses**



LIONIC® energy system – no need to invest in central battery rooms

Charging is carried out on site

- No central charging station
- No need for battery changing equipment
- No ventilation and extraction systems
- No central water filling
- Short distances to charging point

LIONIC® energy systems can be charged at decentralised charging points. As no gassing occurs during charging and LIONIC® energy systems do not contain liquid electrolyte, the special regulations for central battery charging stations (e.g. DIN 50272-3, BGHW, ZVEI datasheet) do not apply in many respects to the charging of LIONIC® energy systems.

Investment costs for setting up these charging points are significantly reduced, as no special ventilation or acid-resistant floor material is required.

In many cases, working time is increased due to the reduced distance travelled to reach the decentralised charging station.

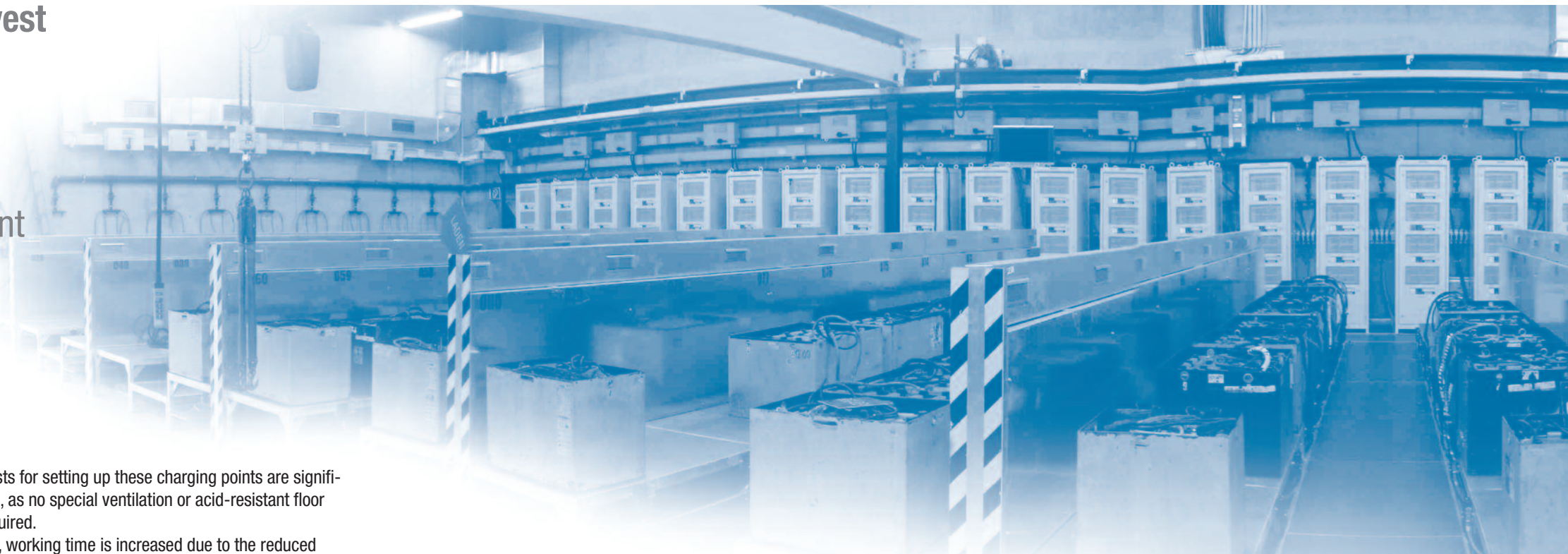


Fig. 10: In the future the investment in central battery charging rooms with costly extraction and handling systems can be dispensed with

E/PzS lead-acid batteries vs. LiFePO₄ lithium-ion batteries

Lead-acid batteries	Characteristics	Lithium-ion batteries
40 Wh/kg	Energy density	95 – 140 Wh/kg
Up to 70 %	Charging efficiency [%]	Up to 95 %
1200 cycles	Charge/discharge cycles	> 3000 cycles
Gassing and water loss occurs when charging	Emissions	Emission-free (zero gassing)
Required	Maintenance	Not required
Charging: 50 % in approx. 3 h, 90 % in approx. 6 – 7 h	Fast charging capability	Charging: 90 % in approx. 1.5 - 2 h
Negative effect on service life	Opportunity charging	No negative effect on service life

Fig. 11: Comparison of main characteristics

Comparison of the main characteristics of lead-acid and lithium-ion batteries

From the point of view of the user of battery-powered industrial trucks, the current method of propulsion with lead-acid batteries has several significant disadvantages, in spite of good reliability overall. With today's knowledge, no satisfactory solutions to these problems are likely to be available in the future.

Significant improvements can be achieved here by the use of lithium-ion batteries, e.g. higher energy efficiency (lower operating costs), very short charging times (effective opportunity charging), freedom from maintenance, emission-free recharging, lower weight and volume and longer service life. (See Fig. 11)

Lithium iron phosphate (LiFePO₄) traction batteries have been used in various parts of the materials handling industry for some time.

Previous experience has confirmed that lithium iron phosphate (LiFePO₄) batteries possess superior system-specific properties to lead accumulators.

These energy systems are very robust and are distinguished by an extremely long service life.

From current results, a service life of more than 3000 charge/discharge cycles can be expected. This is at least 2.5 times the average life of E/PzS batteries.

As a pioneer of these new energy systems, the BENNING LIONIC® range now offers energy systems with capacities of 120 Ah, 240 Ah, 360 Ah and 480 Ah to replace the E/PzS lead-acid batteries previously used in 24 V and 48 V industrial trucks.

Buy or lease: choose the most cost-effective option for you



Fig. 12: The BENNING leasing model offers a comprehensive array of services to suit your Li energy package requirements

Flexibility and maximised availability at a fixed monthly price

Perfectly aligned with the specific operational processes of a company, leasing models for capital goods have now become a common feature of cost-efficient business management. They give the owner visibility to plan and allow it to benefit from the very latest products.

The BENNING leasing model for Li energy packages is aimed at both the trade sector and at businesses which operate ground conveyors. It offers the opportunity to experience the benefits of lithium ion technology in practical use without any risk.

A service plan from BENNING is provided for choosing individual leasing lengths for the LIONIC® energy package, ranging from 12 to 60 months. It does away with high initial investment costs, as well as incalculable expenditure for servicing, maintenance or replacement. The leasing rates remain stable. This results in a marked reduction in operating costs, as well as continuous availability of the ground conveyor fleet.

After the end of the leasing period, the customer has the option to buy the Li energy package.

Cost-efficiency

- Respond flexibly to different order situations
- Planning reliability
- Calculable expenditure
- Capital is not tied up
- Quick availability thanks to direct links to the manufacturer

LIONIC® energy systems achieve 2.5 to 3 times more charge cycles



Fig. 13: External charge state and status indicator



Fig. 15: LIONIC® energy systems with different capacities

Fig. 14: Charge state indicator for LIONIC® energy systems



BELATRON Li+ charging systems ensure fastest possible availability of the energy system



Fig. 16: Housing WT 60

Technical data

LIONIC® energy systems	Energy	Capacity	Charging time	Charge current	Dimensions Height x Width x Depth	Weight (± 5 %)
Type	[kWh]	[Ah]	[h]	[A]	[mm]	[kg]
24 V/3 kWh	3.1	120	1.5	80	455 x 608 x 138	52
24 V/6 kWh	6.1	240	2	160	455 x 608 x 202	86
24 V/6 kWh long	6.1	240	2	160	455 x 772 x 160	86
24 V/9 kWh	9.2	360	2	250	455 x 608 x 296	125
24 V/9 kWh long	9.2	360	2	250	455 x 765 x 252	125
24 V/12 kWh	12.3	480	2	300	455 x 776 x 314	165
48 V/12 kWh	12	240	2	120	470 x 775 x 315	175
48 V/18 kWh	18	360	2	180	470 x 784 x 466	258
48 V/18 kWh long	18	360	2	180	470 x 1210 x 308	260
48 V/25 kWh	25	480	2	240	470 x 784 x 614	330
48 V/25 kWh long	25	480	2	240	470 x 1210 x 408	330
80 V/31 kWh	31.1	360	2	180	440 x 975 x 694	460
80 V/31 kWh-D	31.1	360	2	180	720 x 825 x 460	500
80 V/41 kWh-D	41.4	480	2	240	720 x 780 x 651	600
80 V/51 kWh-D	51.8	600	2	300	720 x 825 x 750	790
80 V/62 kWh-D	62.2	720	2.5	300	720 x 900 x 825	890

Protection class: IP54

LIONIC® energy systems

BENNING LIONIC® energy systems consist of 8 or 16 lithium iron phosphate (LiFePO₄) cells arranged in series and are available for capacity ranges of 120 Ah, 240 Ah, 360 Ah and 480 Ah. The LIONIC® energy systems cover a very large proportion of the needs for electrically operated ground conveyors.

LIONIC® energy systems are about 50 % lighter and about 30 % smaller than comparable lead-acid batteries. Every energy system is fitted in a robust housing together with a Battery Management System (BMS) and can be integrated into standard battery trays.

The Battery Management System (BMS) ensures that voltage and temperature limits are maintained during the charging/discharging process. The individual cells are also monitored and are equalised in the event of potential deviations.

BELATRON Li+ charger

BELATRON Li+ units are highly efficient charging systems with an efficiency of up to 96 % and have been specially developed for charging LIONIC® energy systems.

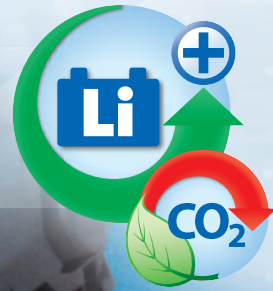
The charging process follows an IU-characteristic and is monitored and controlled by the Battery Management System (BMS) incorporated in the LIONIC® energy system.

With high-efficiency chargers, the electrical energy consumed when charging LIONIC® energy systems is approx. 30 % less than when charging E/PzS lead-acid batteries.

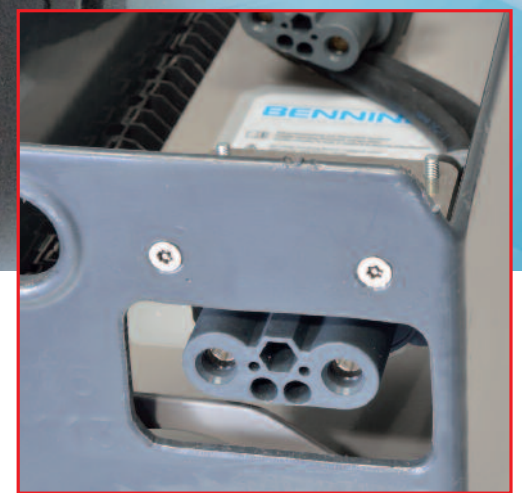
30 % less electrical energy means 30 % lower energy costs and 30 % lower CO₂ emissions.

BELATRON Li+ charger	Rated current	Mains voltage	Mains current	Dimensions Height x Width x Depth	Weight	Housing
Type	[A]	[V]	[A]	[mm]	[kg]	
24 V/80 A	80	1 x 230	11.2	405 x 564 x 318	27	WT 30
24 V/100 A	100	1 x 230	14	405 x 564 x 318	27	WT 30
24 V/120 A	120	3 x 400	6.7	405 x 564 x 318	30	WT 30
24 V/180 A	180	3 x 400	9.8	405 x 564 x 318	38	WT 60
24 V/240 A	240	3 x 400	13.4	405 x 564 x 318	38	WT 60
48 V/120 A	120	3 x 400	10.1	405 x 564 x 318	30	WT 60
48 V/200 A	200	3 x 400	17.8	405 x 564 x 318	38	WT 60
48 V/240 A	240	3 x 400	21.1	905 x 564 x 392	70	WT 120
48 V/300 A	300	3 x 400	26.7	905 x 564 x 392	70	WT 120
80 V/150 A	150	3 x 400	23.0	603 x 312 x 305	31	WT 120
80 V/200 A	200	3 x 400	30.0	603 x 312 x 409	42	WT 180
80 V/240 A	240	3 x 400	36.0	1500 x 600 x 500	220	UC
80 V/300 A	300	3 x 400	45.0	1500 x 600 x 500	220	UC

LIONIC® energy systems – easily integrated into your industrial trucks



Easy opportunity charging using externally accessible plug-in charging connector



LIONIC® – No additional investments in vehicle technology

- Using the existing battery trays
- No need to modify the vehicle
- Requisite counterweights are integrated into the battery tray



Fig. 17: Integral metal plates are used as a counterweight for use in counterbalance trucks.



Fig. 18: Examples of LIONIC® energy systems in conventional battery trays

Fig. 19: An externally accessible plug-in charging connector enables fast opportunity charging without lifting the battery cover. (Option)

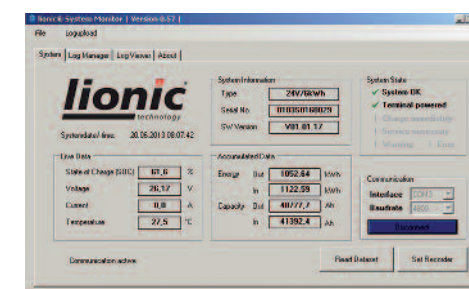


Fig. 20: System overview

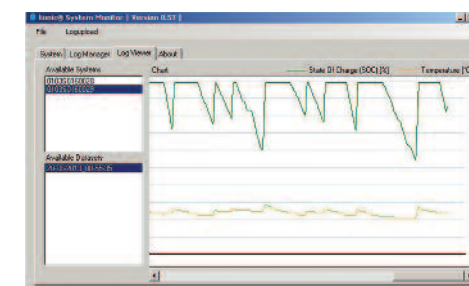


Fig. 21: Opportunity charging overview

LIONIC® Monitoring Software

- Data transmission to laptop using infrared interface
- Current measuring data
- Long-term measuring data



These days, it is essential for battery-powered industrial trucks to have a high availability and to operate reliably and efficiently. The control of the charging/discharging process for the traction batteries and the monitoring of battery temperatures are important measures for ensuring the maximum availability of the truck fleet at all times.

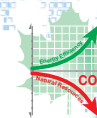
BENNING worldwide

ISO
9001

ISO
14001

ISO
50001

SCCP



Austria

Benning GmbH
Elektrotechnik und Elektronik
Eduard-Klinger-Str. 9
3423 ST. ANDRÄ-WÖRDERN
Tel.: +43 (0) 22 42 / 3 24 16-0
Fax: +43 (0) 22 42 / 3 24 23
E-mail: info@benning.at

Belarus

ООО «BENNING Elektrotechnik
und Elektronik»
Masherova Ave., 6A, 1003
224030, BREST
Tel.: +375 162 / 51 25 12
Fax: +375 162 / 51 24 44
E-mail: info@benning.by

Belgium

Benning Belgium
branch of Benning Vertriebsges. mbH
Assesteenweg 65
1740 TERNAT
Tel.: +32 (0) 2 / 5 82 87 85
Fax: +32 (0) 2 / 5 82 87 69
E-mail: info@benning.be

Croatia

Benning Zagreb d.o.o.
Trnjanska 61
10000 ZAGREB
Tel.: +385 (0) 1 / 6 31 22 80
Fax: +385 (0) 1 / 6 31 22 89
E-mail: info@benning.hr

Czech Republic

Benning CR, s.r.o.
Zahradní ul. 894
293 06 KOSMONOSY
Tel.: +420 / 3 26 72 10 03
E-mail: odbyt@benning.cz

France

Benning
conversion d'énergie
43, avenue Winston Churchill
B.P. 418
27404 LOUVIERS CEDEX
Tel.: +33 (0) 2 32 25 23 94
Fax: +33 (0) 2 32 25 13 95
E-mail: info@benning.fr

Germany

Benning Elektrotechnik und Elektronik
GmbH & Co. KG
Factory I: Münsterstr. 135-137
Factory II: Robert-Bosch-Str. 20
46397 BOCHOLT
Tel.: +49 (0) 28 71 / 93-0
Fax: +49 (0) 28 71 / 9 32 97
E-mail: info@benning.de

Great-Britain

Benning Power Electronics (UK) Ltd.
Oakley House, Hogwood Lane
Finchampstead
BERKSHIRE
RG 40 4QW
Tel.: +44 (0) 1 18 / 9 73 15 06
Fax: +44 (0) 1 18 / 9 73 15 08
E-mail: info@benninguk.com

Greece

Benning Hellas
Chanion 1, Lykovrisi 141 23
ATHENS
Tel.: +30 (0) 2 10 / 5 74 11 37
Fax: +30 (0) 2 10 / 5 78 25 54
E-mail: info@benning.gr

Hungary

Benning Kft.
Power Electronics
Rákóczi út 145
2541 LÁBATLAN
Tel.: +36 (0) 33 / 50 76 00
Fax: +36 (0) 33 / 50 76 01
E-mail: benning@benning.hu

Italy

Benning Conversione di Energia S.r.l.
Via Cimarosa, 81
40033 CASALECCHIO DI RENO (BO)
Tel.: +39 0 51 / 75 88 00
Fax: +39 0 51 / 6 16 76 55
E-mail: info@benningitalia.com

Netherlands

Benning NL
branch of Benning Vertriebsges. mbH
Peppelkade 42
3992 AK HOUTEN
Tel.: +31 (0) 30 / 6 34 60 10
Fax: +31 (0) 30 / 6 34 60 20
E-mail: info@benning.nl

Poland

Benning Power Electronics Sp. z o.o.
Korczunkowa 30
05-503 GŁOSKÓW
Tel.: +48 (0) 22 / 7 57 84 53
Fax: +48 (0) 22 / 7 57 84 52
E-mail: biuro@benning.biz

P. R. China

Benning Power Electronics (Beijing) Co., Ltd.
No. 6 Guangyuan Dongjie
Tongzhou Industrial Development Zone
101113 BEIJING
Tel.: +86 (0) 10 / 61 56 85 88
Fax: +86 (0) 10 / 61 50 62 00
E-mail: info@benning.cn

Russian Federation

ООО Benning Power Electronics
Domodedovo town,
microdistrict Severny,
"Benning" estate, bldg. 1
142000 MOSCOW REGION
Tel.: +7 4 95 / 9 67 68 50
Fax: +7 4 95 / 9 67 68 51
E-mail: benning@benning.ru

Slovakia

Benning Slovensko, s.r.o.
Senkvičká 3610/14W
902 01 PEZINOK
Tel.: +421 (0) 2 / 44 45 99 42
Fax: +421 (0) 2 / 44 45 50 05
E-mail: benning@benning.sk

South East Asia

Benning Power Electronics Pte Ltd
85, Defu Lane 10
#05-00
SINGAPORE 539218
Tel.: +65 / 68 44 31 33
Fax: +65 / 68 44 32 79
E-mail: sales@benning.com.sg

Spain

Benning Conversión de Energía S.A.
C/Pico de Santa Catalina 2
Pol. Ind. Los Linares
28970 HUMANES, MADRID
Tel.: +34 91 / 6 04 81 10
Fax: +34 91 / 6 04 84 02
E-mail: benning@benning.es

Sweden

Benning Sweden AB
Box 990, Hovslagarev. 3B
19129 SOLLENTUNA
Tel.: +46 (0) 8 / 6 23 95 00
Fax: +46 (0) 8 / 96 97 72
E-mail: power@benning.se

Switzerland

Benning Power Electronics GmbH
Industriestrasse 6
8305 DIETLIKON
Tel.: +41 (0) 44 / 8 05 75 75
Fax: +41 (0) 44 / 8 05 75 80
E-mail: info@benning.ch

Turkey

Benning GmbH Turkey Liaison Office
19 Mayıs Mah. Kürkcü Sokak No:16/A
34736 KOZYATAGI
KADIKÖY / ISTANBUL
Tel.: +90 (0) 2 16 / 4 45 71 46
Fax: +90 (0) 2 16 / 4 45 71 47
E-mail: info@benning.com.tr

UAE

Benning Power Systems
Middle East / Office: 918,
9th Floor, AYA Business Center
ADNIC Building, Khalifa Street
ABU DHABI
Tel.: +971 (0) 2 / 4 18 91 50
E-mail: benningme@benning.fr

Ukraine

Benning Power Electronics
3 Sim'yi Sosninykh str.
03148 KYIV
Tel.: 0038 044 501 40 45
Fax: 0038 044 273 57 49
E-mail: info@benning.ua

U.S.A.

Benning Power Electronics, Inc.
1220 Presidential Drive
RICHARDSON, TEXAS 75081
Tel.: +1 2 14 / 5 53 14 44
Fax: +1 2 14 / 5 53 13 55
E-mail: sales@benning.us